



T175-1

COMPACT TRACK LOADER

POWERFUL 68.4-HP NATURALLY ASPIRATED FINAL TIER 4 DIESEL ENGINE

AUTOMATIC TRACK TENSIONING SYSTEM

SELF-ADJUSTING HYDROSTATIC PUMP

5 X 5 DRIVE CONTROL SYSTEM STANDARD

STATE-OF-THE-ART CAB ERGONOMICS FOR COMFORT AND VISIBILITY

BEST-IN-CLASS 7.5-MPH GROUND SPEED

BEST-IN-CLASS TRACTIVE EFFORT AT 11,840 LBS.

BEST-IN-CLASS 34.7-IN. REACH

BEST-IN-CLASS 98-IN. DUMP HEIGHT

CHOICE OF TWO QUICK COUPLER SYSTEMS

HIGH-FLOW HYDRAULICS

WELDED, DEDICATED TRACK SYSTEM FOR SMOOTHER RIDE

OPTIMIZED RADIAL-LIFT BOOM WITH BEST-IN-CLASS 127.5-IN LIFT HEIGHT

QUICK SPECS

Rated Operating Capacity	1750 lbs (794 kg)
Net Power	68.4 hp (51kW) @ 2500 rpm
Operating Weight - approx.	8605 lbs (3903 kg)
Lift Height	127.5 in (3239 mm)

Conditions say no. You say yes.

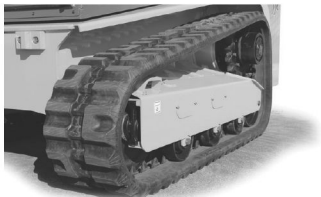
With Yanmar's T175-1 Compact Track Loader you can work efficiently in mud, sand or environmentally sensitive ground. You get the same raw power, lift height and versatility of our skid steers, but with high-strength rubber tracks for unparalleled traction and less surface damage. So you can get into and out of a site quicker and neater than ever before.

INNOVATIVE FEATURES



NEW FINAL TIER 4 YANMAR DIESEL ENGINE

You can never have too much power. You can't have too much fuel efficiency, either, especially with diesel prices so high. That's why Yanmar's Final Tier 4 naturally aspirated diesel engine gives you both. It delivers the power to lift up to 2,500 lbs. along with the fuel-sipping savings your business appreciates.



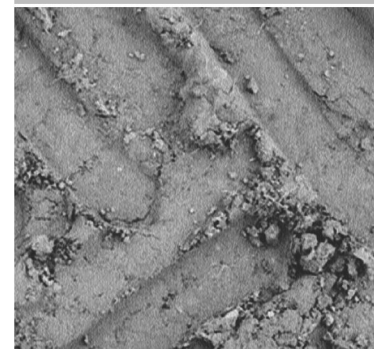
AUTOMATIC TRACK TENSIONING SYSTEM

You're not getting much work done if you constantly have to stop to adjust the tension on your tracks. That's why our industry-exclusive Automatic Track Tensioning System does it for you. It starts before you begin working and constantly adjusts while you're grading, hauling or doing any of the hundreds of other jobs you've got to get done.



ANTI-STALL SYSTEM FOR UNINTERRUPTED POWER

Yanmar's Anti-Stall Technology makes sure you've got the power to see a tough job through to the end without interruption. Anti-Stall automatically adjusts the hydrostatic pump, so as drive load increases, maximum engine torque and drive power are maintained.



T175-1

COMPACT TRACK LOADER

specifications

ENGINE

Make/Model	Yanmar 4TNV98C-NMSL Final Tier 4
Type	4-Stroke Naturally Aspirated
Displacement	203 cu.in. (3.319 L)
Cylinders	4
Net Horsepower @ 2500 rpm	68.4 hp (51 kW)
Peak Torque @ 1600 rpm	179 ft-lbs (242.7 Nm)
Oil Pump Capacity	11 qts (10.4 L)
Alternator Voltage/Amperage	14V/95A

CAPACITY

Operating Capacity at 35% of Tipping Load	1750 lbs (794 kg)
Operating Capacity at 50% of Tipping Load	2500 lbs (1134 kg)
Tipping Load	5000 lbs (2268 kg)
Operating Weight	8605 lbs (3903 kg)

VOLUME

Fuel Tank	24 gal (92 L)
Hydraulic Reservoir	11.0 gal (41.6 L)
Coolant Capacity	3.5 gal (13.3 L)

FORCES

Bucket Breakout - Tilt Cylinder	5189 lbs (2354 kg)
Bucket Breakout - Lift Cylinder	4840 lbs (2195 kg)
Ground Speed - Single Speed	5.1 mph (8.2 km/hr)
Ground Speed - Two Speed	7.5 mph (12.1 km/hr)

TRACK DRIVES

Drawbar Pull / Tractive Effort	11,840 lbs (5371 KN)
Track Type	Rubber
Track Rollers	4
Roller Type	Steel
Track Width	12.6" (320 mm)
Ground Pressure	6.2 psi (0.43 bar)

DIMENSIONS

Overall Operating Height - Fully Raised	168" (4267 mm)
Height to Hinge Pin - Fully Raised	127.5" (3239 mm)
Reach - Fully Raised	34.5" (876 mm)
Dump Angle - Fully Raised	40.2°
Dump Height - Fully Raised	98" (2489 mm)
Maximum Rollback Angle - Fully Raised	102.5°
Overall Height at ROPS	82.8" (2103 mm)
Overall Length with Bucket - Standard Counterweight	144" (3658 mm)
Overall Length without Bucket - Standard Counterweight	110.8" (2814 mm)
Specified Height	67.5" (1715 mm)
Reach at Specified Height	31.1" (790 mm)
Dump Angle at Specified Height	75°
Maximum Rollback Angle at Ground	30°
Carry Position	7" (179 mm)
Maximum Rollback Angle at Carry Position	33°
Digging Position - Below Ground	-0.3" (7.6 mm)
Angle of Departure with Standard Counterweight	30.4°
Ground Clearance	13.3" (343 mm)
Track Gauge	51.7" (1313 mm)
Track Shoe Width	12.6" (320 mm)
Crawler Base	54.8" (1392 mm)
Overall Width - Less Bucket	64.4" (1636 mm)
Bucket Width	65.9" (1674 mm)
Clearance Radius - Front with Bucket	91.4" (2322 mm)
Clearance Radius - Rear with Standard Counterweight	62.1" (1577 mm)
Maximum Rollback at Specified Height	66.8°
Angle of Approach	90°
Grouser Height	1" (25 mm)

HYDRAULICS

Auxiliary Hydraulic Flow - Rated Speed	18.5 gpm (70 L/min)
High-Flow Hydraulic Flow - Rated Speed	34.0 gpm (128.8 L/min)
Transmission Pump Type	Axial Piston
Motor Type	Axial Piston with Planetary Reduction