

180 Lake Ave North  
Paynesville, MN 56362  
Phone: 1-800-864-1649  
www.master-mfg.com



MASTER  
MANUFACTURING

SPOT SPRAYER



SPOT SPRAYER Rev 3 Oct. 2014

Note: Do not return product to the distributor/dealer for warranty work. Call Master Manufacturing at (800) 864-1649 for any warranty work or replacement parts.

## **INTRODUCTION**

Your sprayer has been manufactured to provide the maximum in dependable efficient use. Proper operation and maintenance will ensure long satisfactory service. Study this manual carefully to become familiar with the operation and maintenance instructions.

Keep your manual in a safe, convenient place for future reference. Always mention the model and part number in any correspondence. To insure correct parts service be sure to use the part number and description when ordering.

## **ASSEMBLY**

Check inside tank for any foreign objects. Install gun clips using screws. Attach hose to the discharge port of the diaphragm pump using plastic clamp provided. Install drain cap and washer. Install tank lid tether.

## **OPERATION**

Operating power is obtained directly from a 12 VDC source. Be sure to connect the red to the positive (+) source and attach the black to the negative (-) source.

**IMPORTANT:** Before spraying chemicals, fill the tank half full of plain water to allow familiarization with the sprayer and to prevent waste of expensive chemicals.

## **SPRAYER MAINTENANCE**

A sprayer is a carefully designed and built machine that should provide many years of reliable service if properly cared for, the main rule in caring for any sprayer is: **KEEP IT CLEAN.** Neglect costs dollars in repairs, wasted spray material and premature replacement of the sprayer.

## **CLEANING & STORAGE**

Most spray materials are highly corrosive. The most important aspect of long dependable service from the sprayer is a thorough cleaning immediately following each use. In addition, the residue of one type of chemical could cause an undesirable effect when a different chemical is used for a different purpose.

The most effective cleaning method is to pump several rinses of clean water through the tank, pump, hoses, boom, spray gun, etc. A neutralizing agent such as a solution of Nutra-Sol, a detergent or household ammonia as recommended by the chemical manufacturer can assist in removal of a persistent chemical. When the system is thoroughly cleaned drain the tank, suction line, pump, hoses, etc.

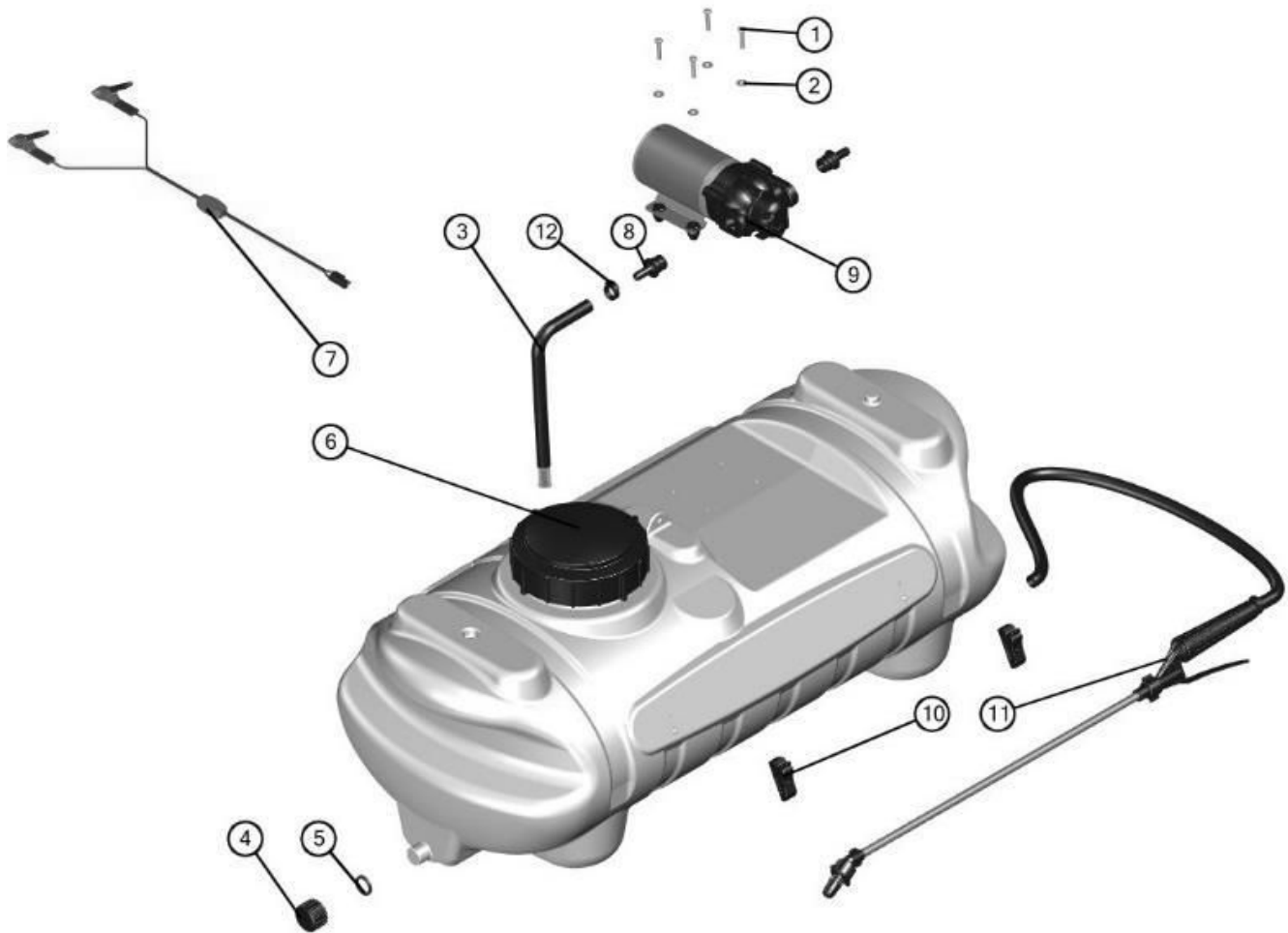
The following steps should be followed for the maintenance and storage of your sprayer.

1. Wash and flush out sprayer after completion of each phase of your program. Flush out sprayer when changing chemicals if there is a possibility of the chemicals being incompatible. Use of a detergent is advisable if the chemical manufacturer does not make specific cleaning recommendations. Flush system completely, including nozzles. Never use metal objects to open clogged nozzles.
2. Clean sprayer thoroughly before storing at the end of the spraying season. Permanent type anti-freeze added to the final rinse will leave a rust inhibiting film in parts of the sprayer.

## **WARRANTY PARTS SERVICE**

Products sold shall be warranted from defects in workmanship and material when used within the service and scope for which they were designed for a period of one year from date of purchase. Warranty covers replacement parts **ONLY**. Contact Master Manufacturing for warranty parts at (800) 864-1649. Do not return product to your distributor/dealer. Please have your original sales receipt or other proof of purchase date when requesting any warranty parts. To ensure the correct parts are acquired always provide the model number of your sprayer/attachment and the part number and description obtained from the illustrated parts breakdown in this manual.

# Spot Sprayer



BOM ID	Name	Description	Qty
1	33-103127	Screw, Machine, 10-24 x 1"	4
2	33-103131	Washer, #10, Zinc	4
3	33-103133	Hose Assembly, 3/8" x 21", W/Fil	1
4	33-103218	Outlet Cap, 3/4" Black	1
5	33-103220	Gasket, 3/4" SuperSeal	1
6	33-103231	Tank(SEE NOTE 1)	1
7	33-103233	HARNESSE, WIRE, SS.	1
8	EF-QC-A38	Fitting, QA x 3/8"HB, Black (SEE NOTE 3)	2
9	EF2200-QA	Pump, Quick Attach Ports(SEE NOTE 2)	1
10	GC-100-KIT	CLIP, GUN (PAIR)	1
11	SG-4507F-38-RUB15-P	Spray Gun Assembly, 3/8"x15'	1
12	SHC-F	SNAPPER HOSE CLIP	2

- **Note 1:**

• <b>33-103231</b>	• <b>15 Gallon Tank</b>
• <b>33-103230</b>	• <b>25 Gallon Tank</b>

- **Note 2:**

<b>EF1000</b>	<b>Pump, 1.0GPM Everflo</b>
<b>EF2200-QA</b>	<b>Pump, 2.2GPM Everflo, Quick Attach Ports</b>
<b>EF3000-QA</b>	<b>Pump, 3GPM Everflo, Quick Attach Ports</b>
<b>33-103229</b>	<b>Pump, 1GPM, Shurflo</b>
<b>33-103232</b>	<b>Pump, 1.8GPM, Shurflo</b>
<b>33-103242</b>	<b>Pump, 3GPM, Shurflo</b>
<b>33-103208</b>	<b>Pump, 1GPM, Delavan</b>
<b>33-103209</b>	<b>Pump, 2GPM, Delavan</b>
<b>33-103205</b>	<b>Pump, 3GPM, Delavan</b>

- **Note 3:**

<b>3A38</b>	<b>Threaded Pumps Only</b>
<b>EF-QC-A38</b>	<b>Quick Attach Pumps Only</b>